

N.E. 1/4, OF SECTION 18, T.6N., R.1W., S.L.B. & M.

IN OGDEN CITY
SCALE 1" = 200'

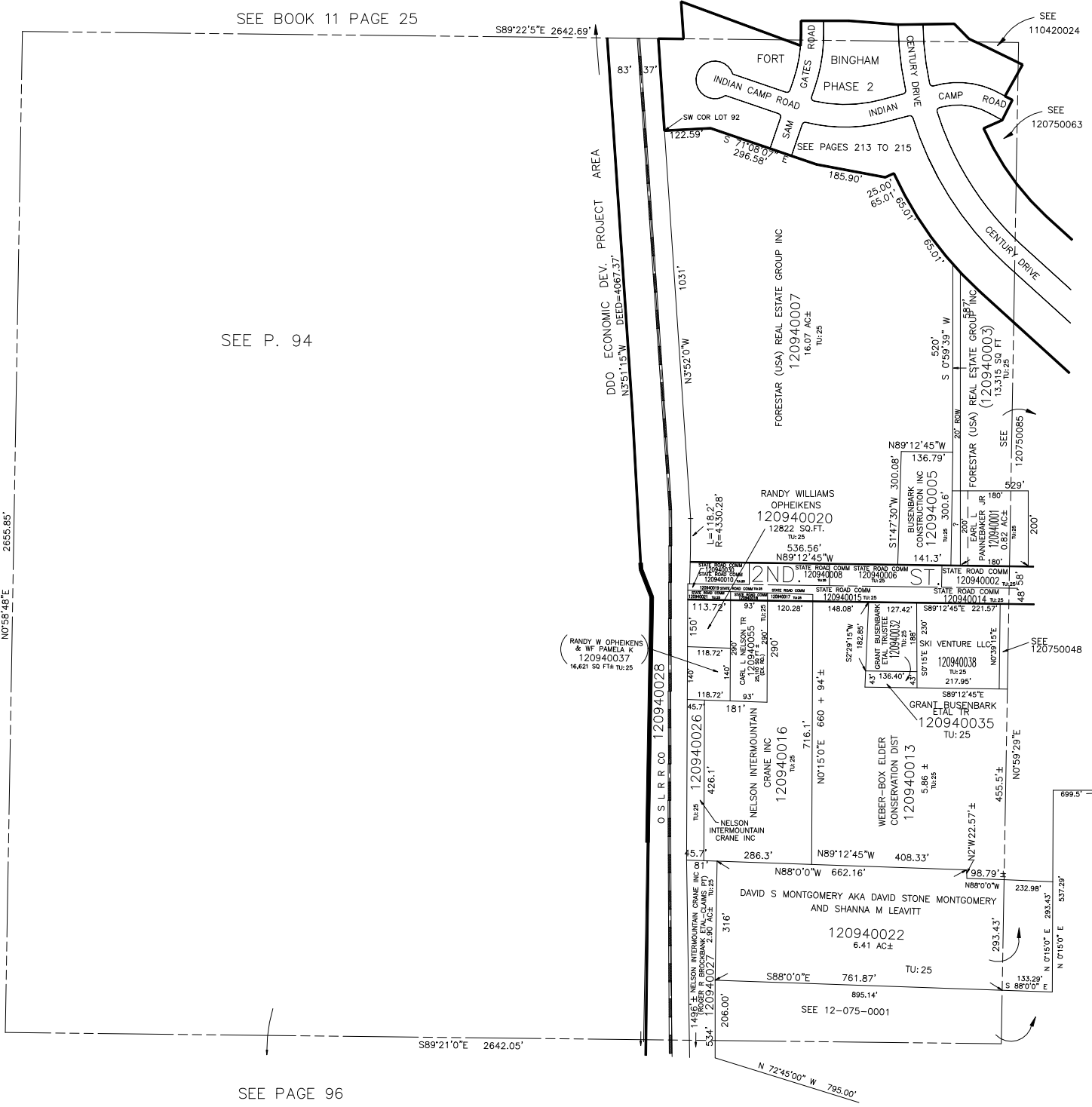
NOTE: P. 95 OMITTED

TAXING UNIT: 25, 359

SEE BOOK 11 PAGE 25

S89°22'5"E 2642.69'

SEE P. 94



SEE PAGE 96